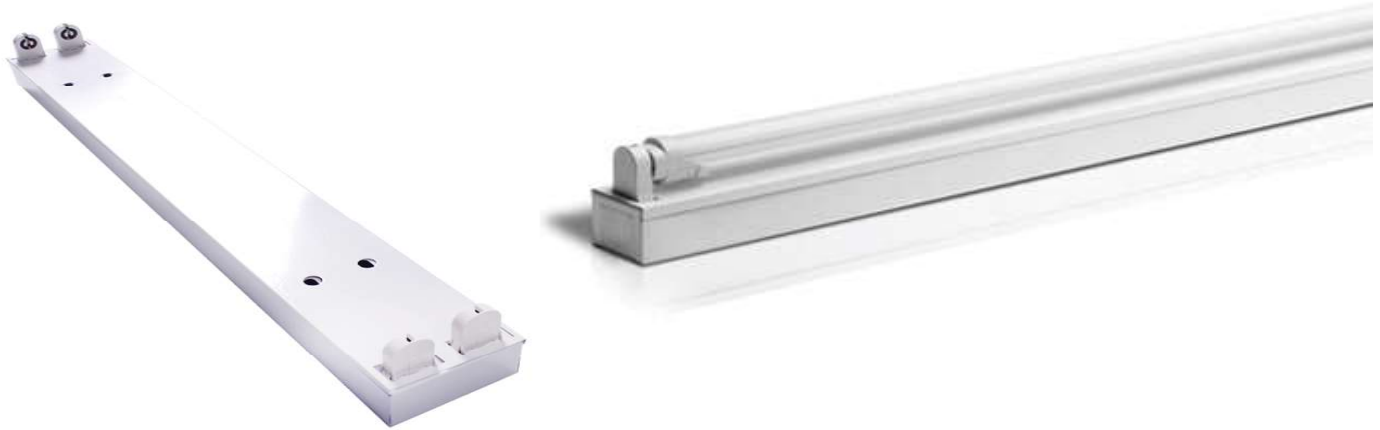


AL TSA Open Channel



INDOOR SERIES



PRODUCT OVERVIEW

The **T8 OPEN CHANNEL** is a LED lighting solution designed to combine efficiency and longevity. It is versatile, robust, cost effective and the most energy effective industrial lighting solution available.

The **OPEN CHANNEL** Comes standard and available in Single or Double fittings.

These fittings can be used in all Commercial Industries such as office spaces , Hospitals , Shopping malls And Stores. Both Single and Double Fittings are equipt for T8 Tubes which are available separatley.

Quality comes standard...



Hours
LIFESPAN



IP40
INDOOR



Low
MAINTENANCE



Year
WARRANTY



Product
CERTIFICATION

APPLICATIONS

Offices

Stores

Commercial Areas

Workshops

Logistics Centers

Hospitals

Warehouses

Hall Ways

CONSTRUCTION

Powder-Coated

Lightweight

Cold Rolled Mild Steel

PMMA Lens

FEATURES

Low Glare Design

LED Tubes IP53-rated

Power Factor: 0.95

Colour Rendering Index: >80

Optional LED Tubes IP65-rated

Thermal Resilience up to 70°C

SABS Certified

Easily replaceable Tubes

Surge Protection

Open Channel

TECHNICAL DATA | Standard

MODEL No.:	SIZE	VOLTAGE (V)	POWER/TUBES (W)	LUMEN (lm)	TUBE No.	CCT (K)	SIZE (FT)
SINGLE							
MB/SOC/S06	600	100-277	7,10	160	1	2200-6000	2
MB/SOC/S12	1200	100-277	9,14,16,18,20,22,25	160	1	2200-6000	4
MB/SOC/S15	1500	100-277	9,14,16,18,20,22,25,30	160	1	2200-6000	5
DOUBLE							
MB/SOC/D06	600	100-277	7,10	160	2	2200-6000	2
MB/SOC/D12	1200	100-277	9,14,16,18,20,22,25	160	2	2200-6000	4
MB/SOC/D15	1500	100-277	9,14,16,18,20,22,25,30	160	2	2200-6000	5

MECHANICAL DATA

Lamp Description:	Hongli 2835
Size Description:	2FT 4FT 5FT
Operating Temperature:	-20°C ~ 50°C
Housing Material:	Cold Rolled Mild Steel Aluminium / 6063 Aluminium & Anodize Available
Lens Material:	PC
Glare Index:	UGR22
Housing Finish:	Silver/White With Anodize Corrosion Available
IP Rating	IP42 / IP20 Available
Mounting Configuration:	Internal Into Fitting
Flicker Specifocation:	SVM<0.4

ELECTRICAL DATA

FEATURES		
Driver:	Zhengyuan	EMC Applicable Standards
Electrical Class:	Class 1	Dali Control
Nominal Voltage Range:	184 - 265 VAC	1-10V Control
Power Factor:	>0.95	Triac Dimmable
THD:	12%	Battery Backup 20% 30-90 Minutes
Surge Protection:	Standard 1000V- Optional 2750V / 4KV	Motion Sensor