

# FX Solar Streetlight



## OUTDOOR SERIES



## PRODUCT OVERVIEW

The FX Solar Streetlight provides extreme lumen output and long lasting stability. Designed for industrial and commercial lighting solutions. Constructed with integrating solar panels and high efficiency LED Chipsets which can reach 220LM/W this is more than twice the average brightness of ordinary LED light sources, the all in one solar streetlight features intelligent power adjustments and automatic weather judgement. with intelligent charging and discharging management with a high efficiency battery which offers more than >2000 times battery cycles. Easy installation with a adjustable angle mounting bracket which is suitable for a variety of modeling lamp pole installation methods.

### Quality comes standard...



Hours  
LIFESPAN



IP65  
OUTDOOR



Low  
MAINTENANCE



Year  
WARRANTY



Product  
CERTIFICATION

### APPLICATIONS

Highways

Industrial Complexes

Estates

Parking Areas

Warehouses

Shipping Yards

### FEATURES

Water, Dust & Damp Proof

Life PO4 Batteries

High Luminous Efficiency

Internal battery box

Excellent heat dissipation

Aluminium Heat sink

Charging Time: 6 - 8 Hours

Easy Installation

Monocrystalline Solar Panel

IP66 Optional

Discharge Time: 12-15Hrs

Smart Control

### CONSTRUCTION DETAILS

Die Casting Aluminium Housing

Poly Methyl Methacrylate Lens

Black/Silver Finish

IP65 Ingress Protection

IK10 Impact Resistance

Clear Glare Free Lens

## FX Solar Streetlight

### TECHNICAL DATA

#### SPECIFICATIONS

Power Consumption (W):	40W 50W 60W 80W 100W 120W	Luminaire Efficacy (lm/W):	170-220(lm/W)
LED Quantity (pcs):	96 144 144 192 240 288	Unified Glare Index (UGR):	UGR25 (Standard)
Correlated color Temp (CCT):	2700K - 6500K	L&B Rating:	L90 B10 50 000hrs
Colour Rendering (CRI):	70		L70 B10 100 000hrs
Total Harmonic Distortions (THD):	≤10%	Impact Protection (IK):	IK10
Power Factor (PF) & Efficiency :	>0.95   >88%	Ingress Protection (IP):	IP65 (Standard)
Electrical Class:	Class I		IP66 (Optional)
Operating Temp:	-25°C ~ + 65°C	Beam Angle:	140° - Symmetrical
Surge Protection:	4KV/6KV/10KV		150°x 60° - Asymmetrical
LED Type:	Bridgelux (3030 - SMD)	Lifespan:	50 000hrs
		Working Time:	12-15hours
Mounting Options:	Pole Mount		10-12hours - Rainy Days
Mounting Hole Size:	70-75mm	Charging Time:	6-8hours
Fault Indicator:	RED/BLUE/GREEN	Body Sensor:	160° , >9m

#### MATERIAL STRUCTURE

Housing Body:	6063 Die-Casting Aluminium	Housing Colour:	Black
Lens Diffuser:	Poly Methyl Methacrylate (PMMA)	Anti Corrosion:	Optional Coating
Lens:	Clear Glare Free Lens		

#### BATTERY SPECIFICATIONS

Type:	LifePO4	Rated Voltage (V):	12.8V
Cycles:	>2000	Battery Power Indicator:	100%-75%-50%-25%
Battery Spec (AH):	40W-18AH 50W-36AH 60W-42AH 80W-57AH 100W-63AH 120W-72AH		

#### SOLAR PANEL

Housing Body:	Monocrystalline Silicone		
Rated Voltage (V):	18V		
Lifespan:	25 Years		
Battery Spec (AH):	40W-18V65W 50W-18V70W 60W-18V80 80W-18V100W 100W-18V130W 120W-18V140W		

### ANTI Corrosion Table

CATEGORY	CORROSIVITY		
C1	Very Low	Heated Buildings	Dry or cold with very low pollution
C2	Low	Low levels of pollution	Temperate low pollution
C3	Medium	Urban & Industrial Moderate pollution	High/Moderate pollution
C4	High	Coastal & Industrial Moderate pollution	High/Moderate pollution
C5-I	Very High	High humidity & Industrial	Agressive Atmosphere
C5-M	Very High	Coastal & Offshore areas	Marine areas With high salinity

## FX Solar Streetlight

### ORDERING INFORMATION

XXX	XXX	XXXX	XXXX	XXX	XXX	XXX	XXX	X
Product Family	Product ID	Lamp Size	Solar Panel & Battery	Power	Control	Efficacy	CRI	Glare Rate
Solar Streetlight (SSL)	FX Solar Streetlight (FXS)	L848.60xW385.50xH265.90 (832)	18V65W(162) 27AH 12.8V	40W (0040)	Mode (1): Time control 3hrs100% +2hrs 80% +7hrs 25%	170lm/W (170)	70 (7)	25 (25)
		L1077.80xW385.50xH265.90 (132)	18V70W(173) 36AH 12.8V	50W (0050)	Mode (2): 100% 4hrs+8hrs 30%	220lm/W (220)		
		L1077.80xW385.50xH265.90 (102)	18V80W(184) 42AH 12.8V	60W (0060)	Mode (3): 100% 4hrs+8hrs 30% with Motion sensor			
		L1548.68xW385.41xH265.90 (153)	18V100W(115) 57AH 12.8V	80W (0080)	Mode (4): 30% 12hrs 100% Motion sensor			
		L1863xW385.50xH265.90 (182)	18V130W(136) 63AH 12.8V	100W (0100)	Mode (5): Other Customized			
		L1863xW385.50xH265.90 (183)	18V140W(147) 72AH 12.8V	120W (0120)				

### Suggested Installation Heights



## FX Solar Streetlight

### PRODUCT SPECIFICATIONS

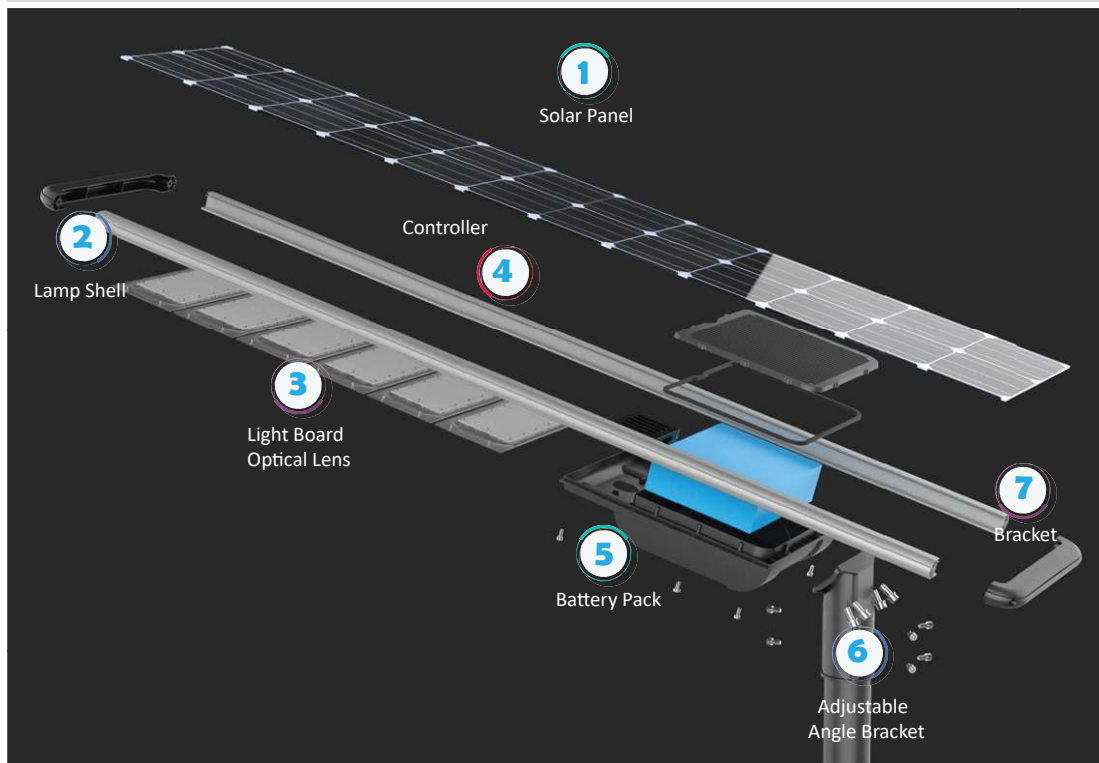
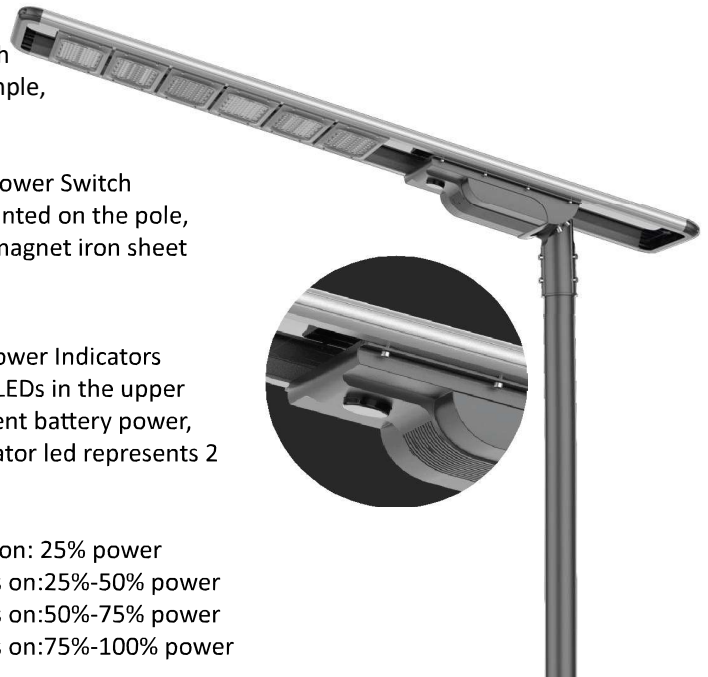
The Controller of FX series adopts extremely simplified design, integrated controller, microwave induction, and magnetic switch in one, which makes the operation simple, the maintenance simple, and the stability is higher

Solar Light Controller Status Indicator		
Indicator Light	Status	Indicator Light description
① Yellow (Motion sensor)	On	Movement Detected
	Off	Without Movement Detected
② Green (LED)	On	LED with output: Light on
	Off	LED without output: Light off
	Flicker	LED Short circuit
③ Blue (Battery)	On	Battery power enough for work
	Off	Battery Without output
	Flicker	Battery undervoltage
④ Red (Solar panel)	On	Battery charged to full power
	Off	Solar panel without output (at night)
	Flicker	Solar panel is charging the battery
⑤ Red & Green & Blue	Cycle light on in sequence	Battery cable plugged in backwards, poor battery connection contact, faulty battery, no battery connected

1. Magnet Power Switch  
Before mounted on the pole, take away magnet iron sheet

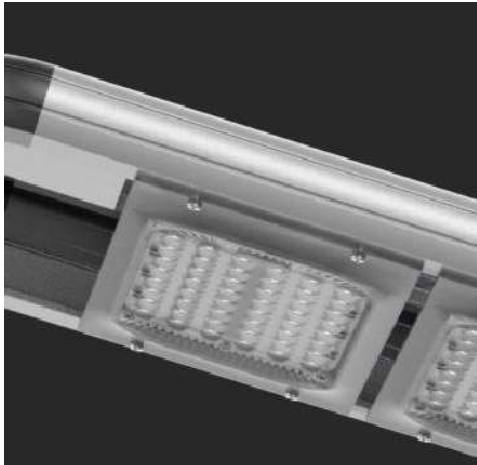
2. Battery Power Indicators  
The 4 blue LEDs in the upper row represent battery power, and 1 indicator led represents 2 5% power.

1-indicator on: 25% power  
2-indicators on: 25%-50% power  
3-indicators on: 50%-75% power  
4-indicators on: 75%-100% power

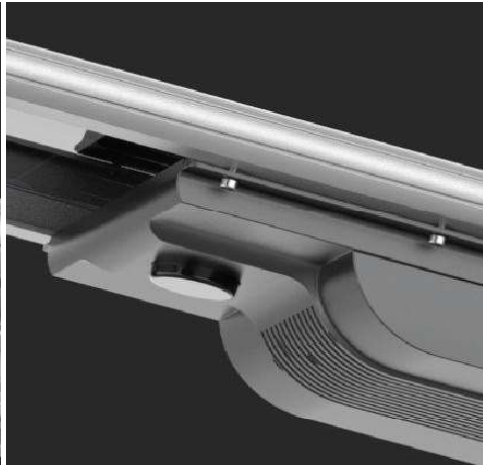


## FX Solar Streetlight

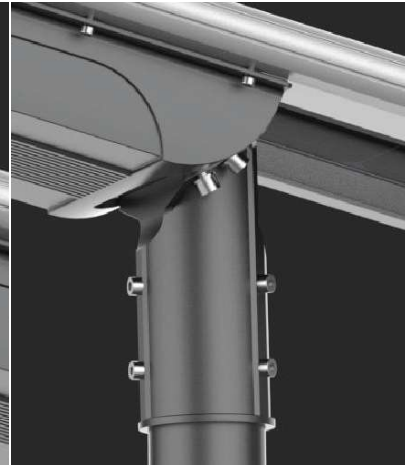
### PRODUCT SPECIFICATIONS



220LM/W  
High Efficiency LED Chipset



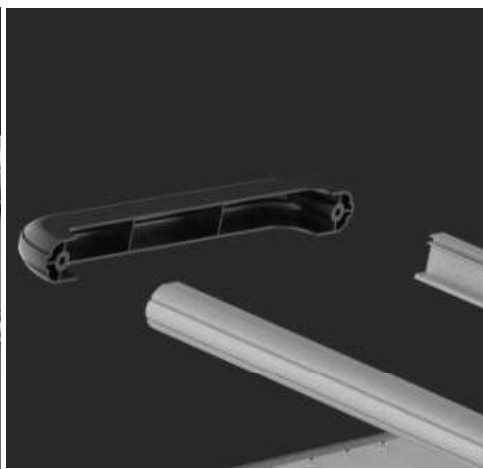
Sensor + Magnet switch  
+ Indicators for all status



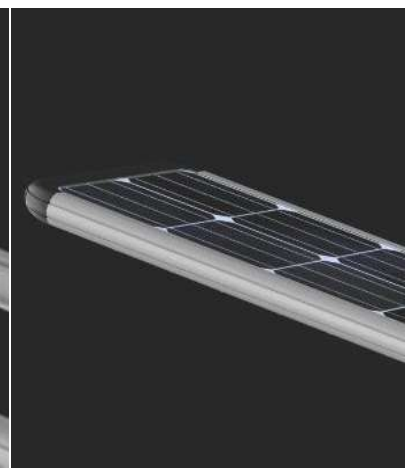
0° - 90° angle  
adjustable bracket



Easy maintenance  
battery pack



High-strength aluminum  
alloy frame



High-efficiency mono  
solar cells: >21%

## FX Solar Streetlight

### PRODUCT SPECIFICATIONS



Equipped with a 433 remote control, which uses a drone remote control solution.  
The remote control distance can reach 30 meters, which can directly penetrate obstacles.  
At the same time, it can control multiple lamps.

Four lighting modes are available. The mode can be selected according to the seasonal sun .  
The most suitable mode can be selected according to the seasonal sunshine.

#### User manual for remote controller:

**Demo:** No matter day or night, light "on" for 1 minute, only for test use.

**Off:** No matter day or night, light "OFF" .

**L:** At night, 12 hrs full power.

**T:** At night, 4 hrs full power + 8 hrs 25%.

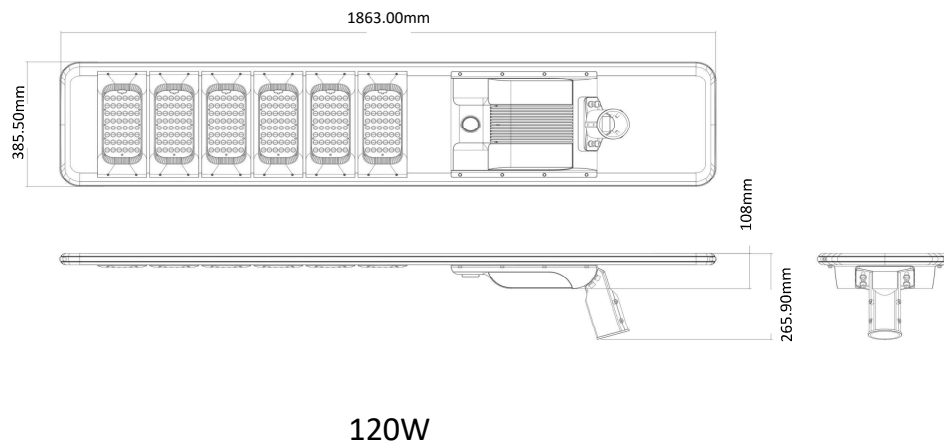
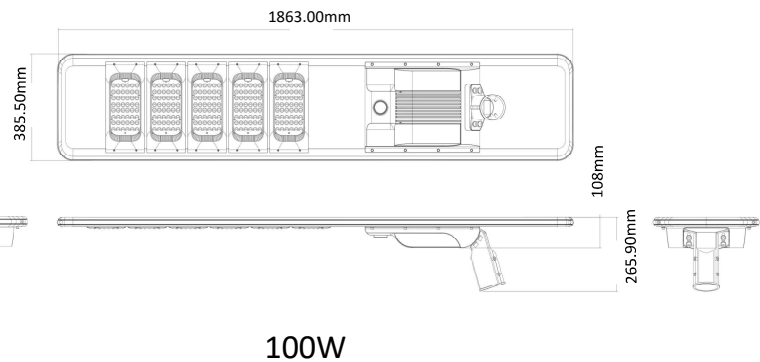
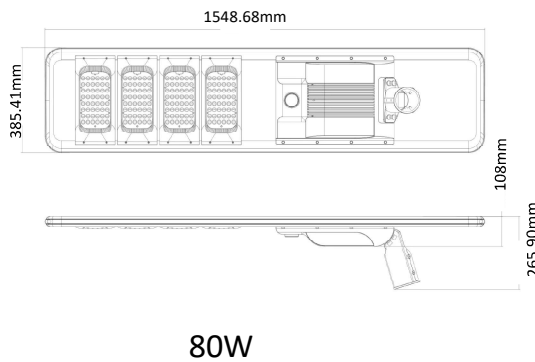
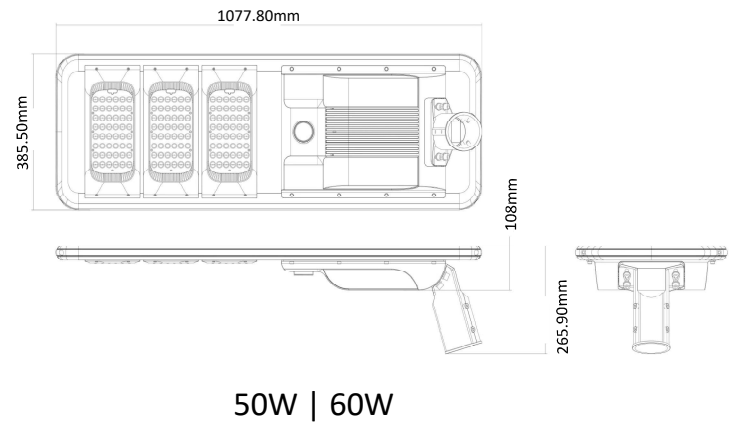
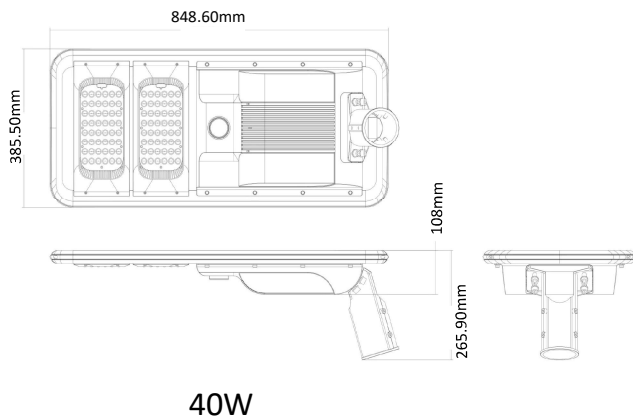
**M:** At night, 12 hrs motion sensor control.

**U:** At night, 4 hrs full power + 8 hrs motion sensor control.



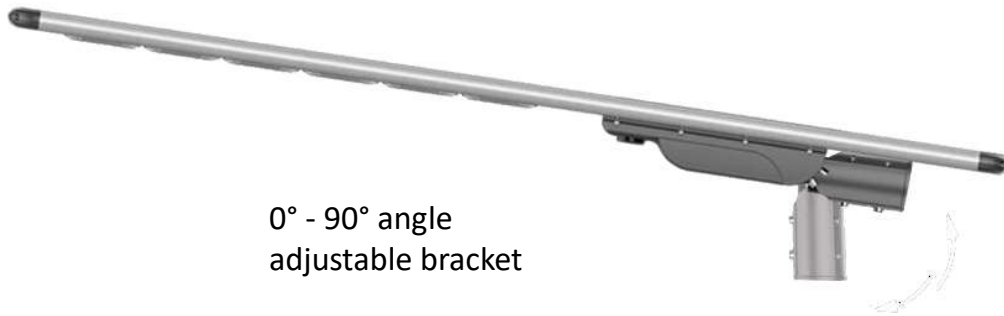
## FX Solar Streetlight

### PRODUCT DIMENSIONS



## FX Solar Streetlight

### INSTALLATION

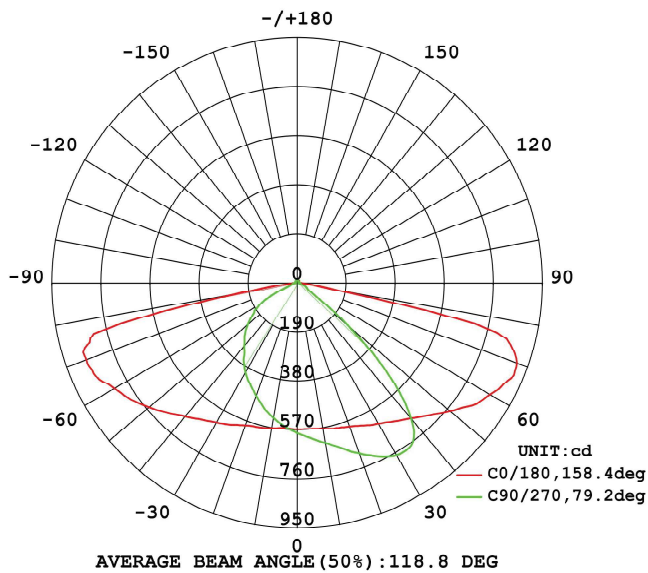




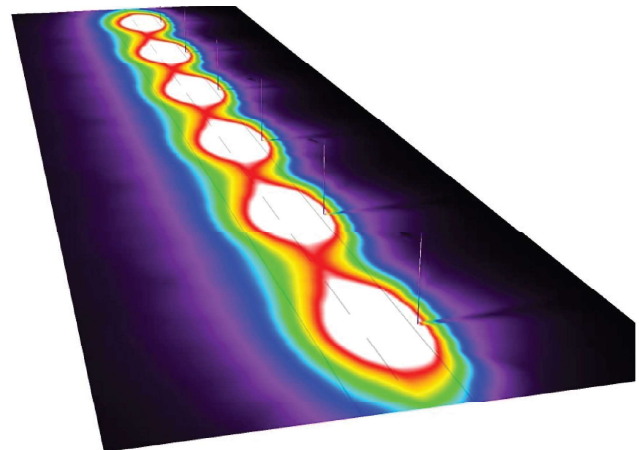
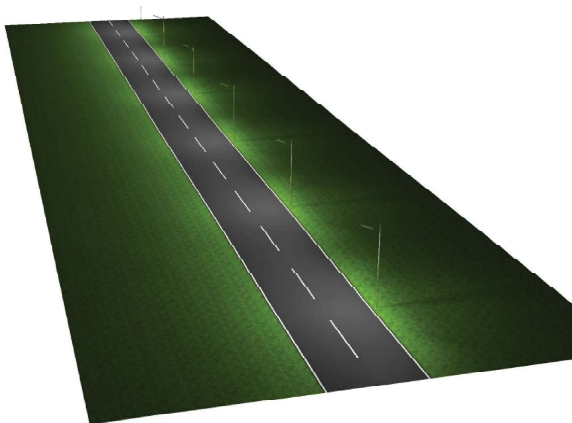
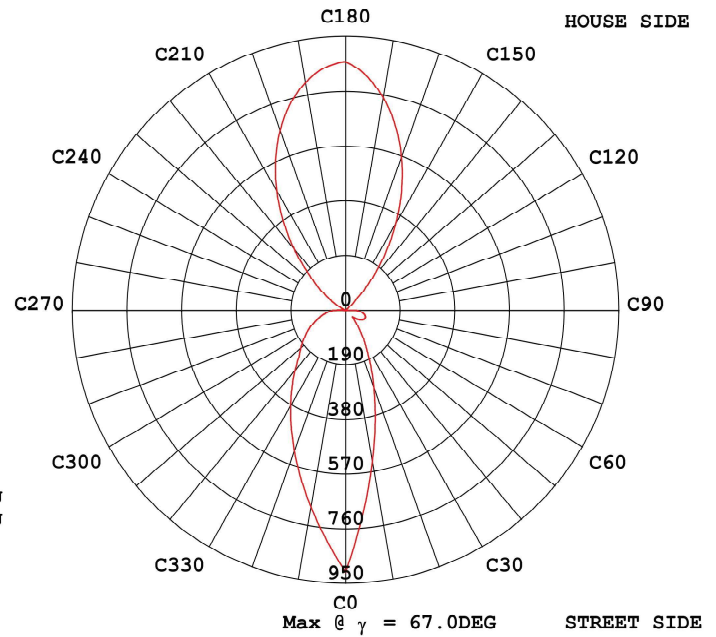
## FX Solar Streetlight

### PHOTOMETRICS

INTENSITY DISTRIBUTION DIAGRAM  
IN C PLANS



MAX INTENSITY CONE SURFACE  
DISTRIBUTION DIAGRAM





## FX Solar Streetlight

### INSTALLATION

---

