

# AL TSA Triton Ex High-bay



EXPLOSION PROOF SERIES



## PRODUCT OVERVIEW

The **AL TSA TRITON Ex Highbay** is designed for spaces with high aesthetic appeal & Industrial Environments and is perfectly suitable for Zone 1&2, 21&22 Environments. The Ex Highbay is efficient with crisp white light output, offering high efficiency drivers and LED Chipsets.

With an isolated LED compartment which allows reducing high temperatures, the luminaire provides low operational costs in hard and heavy industrial applications.

**Offering multiple beam angles** with exceptional high performance, high quality and energy efficiency.

The Triton Ex Luminaire is versatile with universal applications that can be used as a bulkhead/floodlight & lowbay.

Quality comes standard...



Hours  
LIFESPAN



IP66  
WEATHERPROOF



Low  
MAINTENANCE



Year  
WARRANTY



Product  
CERTIFICATION

### APPLICATIONS

Oil & Gas Industries	Pharmaceutical Industries	Waste and Sewage Facilities
Chemical, Petrochemical	Pulp and Paper	Power Generation

### FEATURES

Zone 1&2	Temperature Reduction
Zone 21&22	Ex-Proof Design
Multiple Beam Angles	Energy Efficient
Isolated LED Compartment	Low Glare Rate

### CONSTRUCTION

Die Cast Aluminium Housing
Tempered Glass
Silicone Rubber Gasket
IP66 Ingress Protection

## Triton Ex | Technical Data

### TECHNICAL DATA

AT/GYD/620/50W



Ex Rate: Ex de IICT6, IP66  
 Application: Zone 1,2,21&22  
 Voltage: 90-295VAC 50-60Hz  
 Light Source: CREE Chipset  
 Size:270mmx270mmx170mm  
 Driver : Meanwell  
 Lumen/w: 130lm/w  
 5 Year Warranty

AT/GYD/620/100W



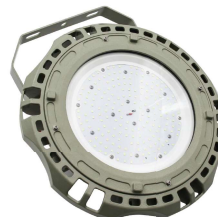
Ex Rate: Ex de IICT6, IP66  
 Application: Zone 1,2,21&22  
 Voltage: 90-295VAC 50-60Hz  
 Light Source: CREE Chipset  
 Size:320mmx320mmx170mm  
 Driver : Meanwell  
 Lumen/w: 130lm/w  
 5 Year Warranty

AT/GYD/620/150W



Ex Rate: Ex de IICT6, IP66  
 Application: Zone 1,2,21&22  
 Voltage: 90-295VAC 50-60Hz  
 Light Source: CREE Chipset  
 Size:360mmx360mmx170mm  
 Driver : Meanwell  
 Lumen/w: 130lm/w  
 5 Year Warranty

AT/GYD/620/200W



Ex Rate: Ex de IICT6, IP66  
 Application: Zone 1,2,21&22  
 Voltage: 90-295VAC 50-60Hz  
 Light Source: CREE Chipset  
 Size:360mmx360mmx170mm  
 Driver : Meanwell  
 Lumen/w: 130lm/w  
 5 Year Warranty

AT/GYD/620/20W



Ex Rate: Ex de IICT6, IP66  
 Application: Zone 1,2,21&22  
 Voltage: 90-295VAC 50-60Hz  
 Light Source: CREE Chipset  
 Driver : Meanwell  
 CCT:5500-6000K  
 5 Year Warranty

AT/GYD/620/35W



Ex Rate: Ex de IICT6, IP66  
 Application: Zone 1,2,21&22  
 Voltage: 90-295VAC 50-60Hz  
 Light Source: CREE Chipset  
 Driver : Meanwell  
 CCT:5500-6000K  
 5 Year Warranty

AT/GYD/620/75W



Ex Rate: Ex de IICT6, IP66  
 Application: Zone 1,2,21&22  
 Voltage: 90-295VAC 50-60Hz  
 Light Source: CREE Chipset  
 Driver : Meanwell  
 CCT:5500-6000K  
 5 Year Warranty

## Triton Ex Highbay

### MECHANICAL & ELECTRICAL DATA

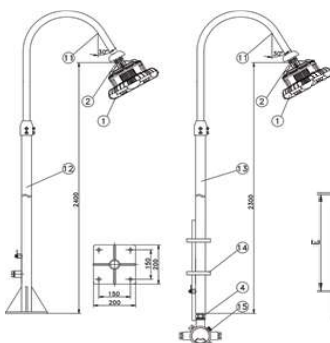
Rated Voltage	100-240VAC, 50-60Hz	Colour Rendering CRI:	70
Power Consumption:	20-70W, 80-120W, 150-200W 220-300W	Colour Temp.	5500K 6000K
Power Factor	>0.95	Beam Angles:	120° Standard (60°190°) Optional
Terminal:	2.5mm	Luminaire Efficacy	120lm/W 130lm/W
THD	<20%	Lifespan	50 000hrs
Efficiency	92%		
Operating Temp.	-20°C ~ 50°C		
Electrical Class	Class I	Glare Index	UGR22 (Standard)
Failure Rate	<3%	MacAdams Value	<4
Beam Angle	60, 90, 120°	Warranty	5-Year Standard
Certifications	ATEX, CNEX CE RoHs, ISO9001		
Driver Type	Meanwell		
Degree Of Protection	IP66	Cable Entry:	G 3/4"
Mounting Options:	Ceiling, Wall Bracket; Pendant		

### ORDERING INFORMATION

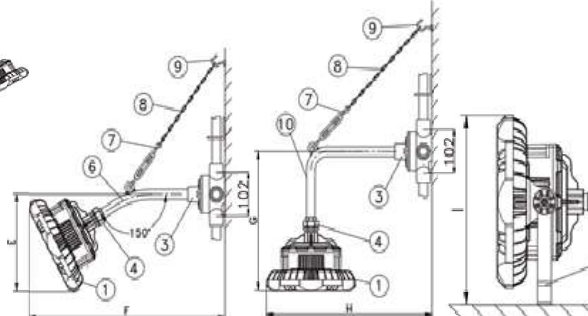
EX	P/C	MM	W	kg	LM	CCT	C	V
Product Family	Product Code	Size	Power	Weight	Luminous flux	Correlated Colour Temperature	Control	Voltage
Explosion Proof	AT/GYD/620/20W	320x320x170	(20W)	(5.25kg)	130lm/w	5500(05)	Standard (STD)	100-277VAC (230)
	AT/GYD/620/35W	320x320x170	(35W)	(5.25kg)	130lm/w	6000(06)		
	AT/GYD/620/50W	270x270x170	(50W)	(5.25kg)	130lm/w			
	AT/GYD/620/75W	320x320x170	(75W)	(6.5kg)	130lm/w			
	AT/GYD/620/100W	320x320x170	(100W)	(6.5kg)	130lm/w			
	AT/GYD/620/150W	360x360x170	(150W)	(8.6kg)	130lm/w			
	AT/GYD/620/200W	360x360x170	(200W)	(10.7kg)	130lm/w			

### MOUNTING OPTIONS

Pendant Mount



Wall Mount



Ceiling Mount

