

# EXPLO Polarbear Series



## EXPLOSION PROOF SERIES



## PRODUCT OVERVIEW

The **AL TSA Polarbear** features high efficiency chipsets with a lifespan of up to 70 000hrs and can be widely used in oil & gas exploration, drilling, petrochemical plants, power plants, and pharmaceutical plants as fixed lighting. With a THD of less than 10%, build in surge protection, robust aluminium housing and tempered glass lens, the Altsa Polarbear is shock and vibration resistant.

The **AL TSA Polarbear** is suitable for explosive gas environments: Group II. Can be used in Zone 1, Zone 2, Zone 22 hazardous areas

### Quality comes standard...



Hours  
LIFESPAN



IP66  
Outdoor



Low  
MAINTENANCE



Year  
WARRANTY



Product  
CERTIFICATION

### APPLICATIONS

Indoors and Outdoors  
Industrial Areas  
Petrochemical Plants  
Oil Refineries  
Offshore Oil Rigs

### CONSTRUCTION DETAILS

Robust Aluminium  
Anti-Corrosion, abrasion proof  
Toughened Safety Glass Lens  
Mounting Brackets and 304 S/Steel

### FEATURES

II 3 G Ex nR IIC T* Gc	Over Voltage/Over Current Protection
II 3 D Ex tc IIIC T* Dc IP66	Power Factor >0.98
EN 60079-0:2012	Impact Rating IK08
EN 60079-15:2010	Chemical Resistant (Sulphur)
EN 60079-31:2009	IP66

## Polarbear Series

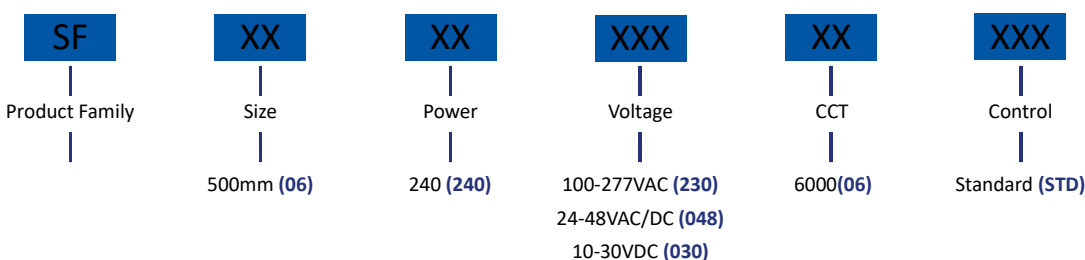
### TECHNICAL DATA

Operating Voltage	100-277VAC / 141-392VDC
Power (Normal)	240W
Surge Protection	5kV
CRI:	70
Colour Temp.	6000
Warranty	5-Year
Luminaire Efficacy	125lm/W
Lifespan	70 000hrs
Frequency:	50/60Hz
Power Factor:	>0.98
THD:	10%
Insulation Class:	Class 1

### MECHANICAL DATA

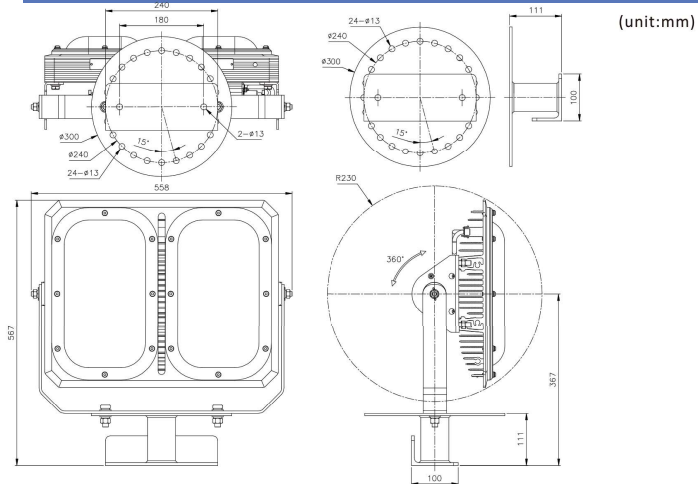
Weight:	18.4Kg
Size:	500*400*161mm
Ambient Temperature:	-40°C ~ +55°C
Connecting Terminals:	3 * 1.0-4mm <sup>2</sup> (L +N+P E)
Cable outer diameter:	Inner Sheath:cp6.5-cp13.9(mm); Outer Sheath:cp12.5-cp20.9(mm)
Cable Entries:	1XM20*1.5
Earthing Protection:	M4 (Internal & external earth bolts)
IP Rating	IP66
Enclosure Material	Copper-free Aluminium
Enclosure Colour	Grey RAL7040
Coating	Epoxy powder coating
Exposed Fastener	Stainless steel

### ORDERING INFORMATION

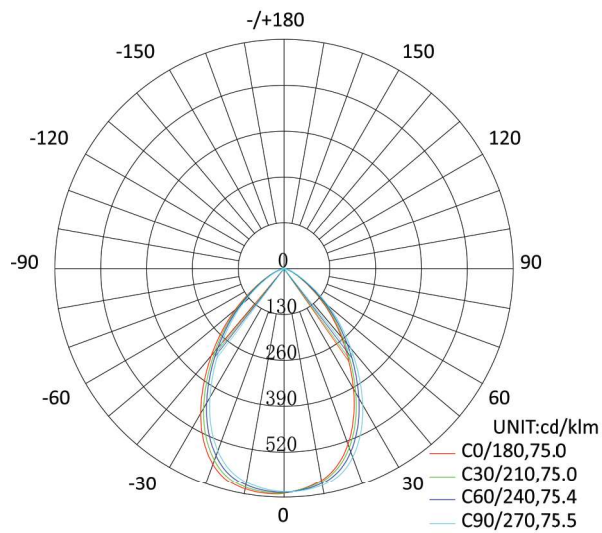


## Polarbear Series

### INSTALLATION DATA



### PHOTOMETRIC DATA



AVERAGE BEAM ANGLE(50%):75.2 DEG

H5V5(80°)/High efficacy LED Source

